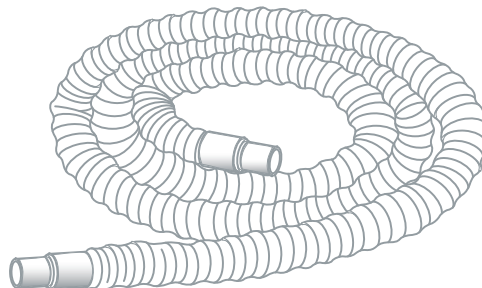
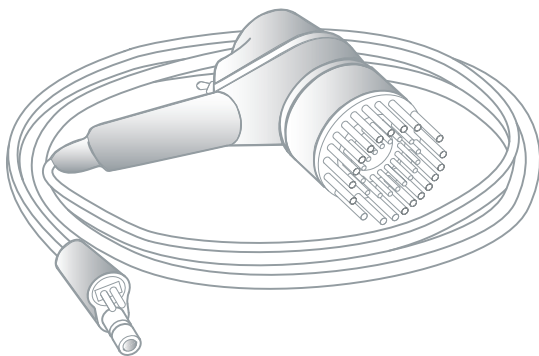
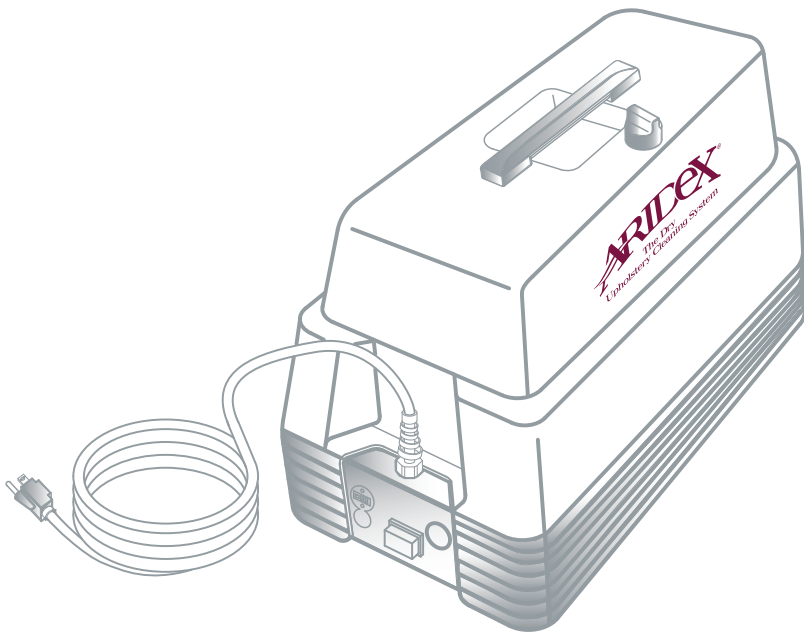


ARIDEX[®]

The Dry
Upholstery Cleaning System



► Instruction & Parts Manual

ORDERS

Please use part numbers when ordering and include the serial number of the machine to insure that you will receive the correct parts. (See Page 21 for serial number location.)

Order from your Aridex Distributor.

Table of Contents

Safety Instructions	1
Grounding Instructions	2
Introduction	3
System Overview	4
Set Up & Cleaning Procedures	5
Prep & Setup	
Cleaning the Fabric	
Tips For Professional Cleaners	9
Fabrics	10
Spot & Stain Removal	14
Accessories & Supplies	15
Maintenance Procedures	17
Troubleshooting	20
Parts Lists & Wiring Diagrams	22

Safety Instructions

IMPORTANT- SAVE THESE INSTRUCTIONS

READ ALL INSTRUCTIONS BEFORE USING THIS APPLIANCE

WHEN USING AN ELECTRICAL APPLIANCE, BASIC PRECAUTIONS SHOULD ALWAYS BE FOLLOWED, INCLUDING THE FOLLOWING:

WARNING: TO REDUCE THE RISK OF FIRE, ELECTRIC SHOCK, OR INJURY:

- 1 Do not leave appliance when plugged in. Unplug from outlet when not in use and before servicing.
- 2 Use indoors only.
- 3 Do not allow to be used as a toy. Close attention is necessary when used by or near children.
- 4 Use only as described in this manual. Use only manufacturer's recommended attachments.
- 5 Inspect cord for damage before each use. Do not use with damaged cord or plug. If appliance is not working as it should, has been dropped, damaged, left outdoors, or dropped into water, return it to a service center.
- 6 Do not pull or carry by cord, use cord as a handle, close a door on cord, or pull cord around sharp edges or corners. Do not run appliance over cord. Keep cord away from heated surfaces.
- 7 Do not unplug by pulling on cord. To unplug, grasp the plug, not the cord.
- 8 Do not handle plug or appliance with wet hands.
- 9 Do not put any foreign object into openings. Do not use with any opening blocked. Keep free of dust, lint, hair, and anything that may reduce air flow.
- 10 Keep hair, loose clothing, fingers, and all parts of body away from openings and moving parts.
- 11 Turn off all controls before unplugging.
- 12 Do not use to pick up flammable or combustible liquids such as gasoline, or use in areas where they may be present.
- 13 Do not pick up anything that is burning or smoking, such as cigarettes, matches, or hot ashes.
- 14 Do not use without filter bag in place.
- 15 Connect to a properly grounded outlet only. See grounding instructions.
- 16 Always turn off this appliance before connecting or disconnecting the upholstery cleaning head.
- 17 Upholstery cleaning head hose contains electrical wires. Do not use if damaged, cut, or punctured.
- 18 Have repairs made only by a qualified Aridex service center.
- 19 This unit is to be used only with Aridex cleaning products.
- 20 If foam discharges from somewhere other than the cleaning head, switch machine off immediately.
- 21 Do not use for picking up health endangering dust such as asbestos.
- 22 This is a commercial appliance, not intended for household use.

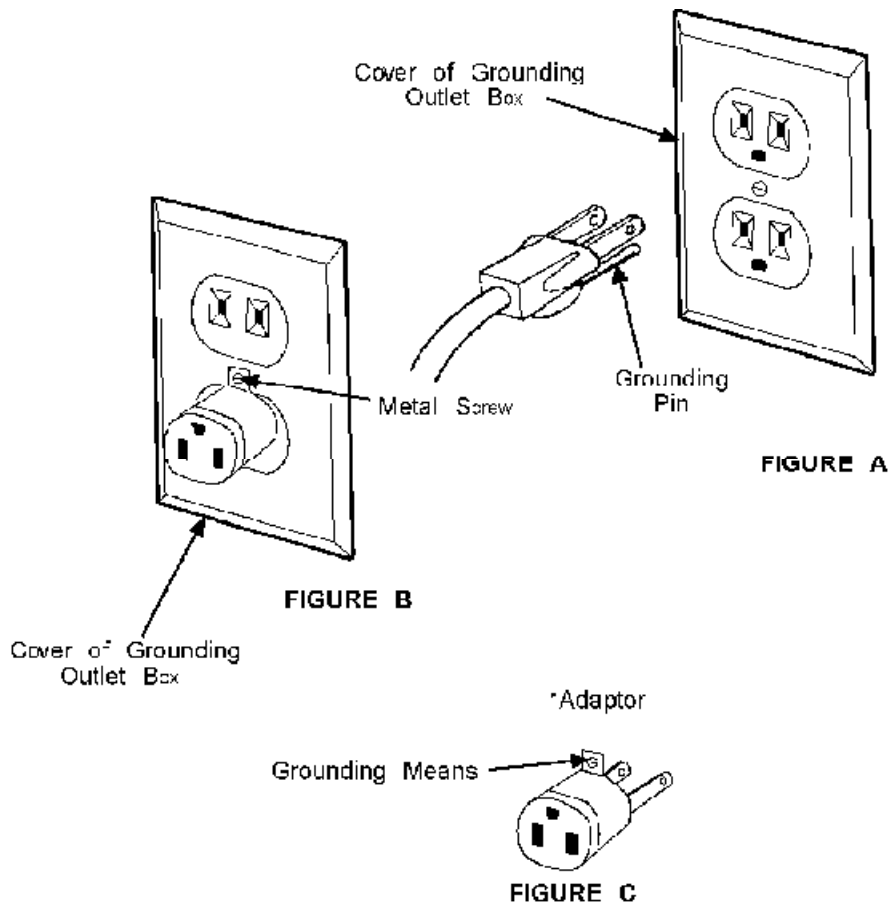
Grounding Instructions

IMPORTANT!

WARNING! Be sure the unit is properly grounded.

This machine should be grounded while in use to protect the operator from electric shock. It is equipped with a three-wire cord and a three-prong grounding type plug to fit a grounding type wall outlet. The green wire (or green and yellow wire) in the cord is the grounding wire. This wire must be connected only to the grounding prong of a plug as shown in figure A. An adapter, figure C, is available for connecting the plug on your machine to two-prong wall outlets. The grounding means on the adapter must be fastened to the wall outlet as shown in figure B to insure adequate protection.

WARNING! Using a grounding adapter is prohibited by the Canadian Electrical Code.


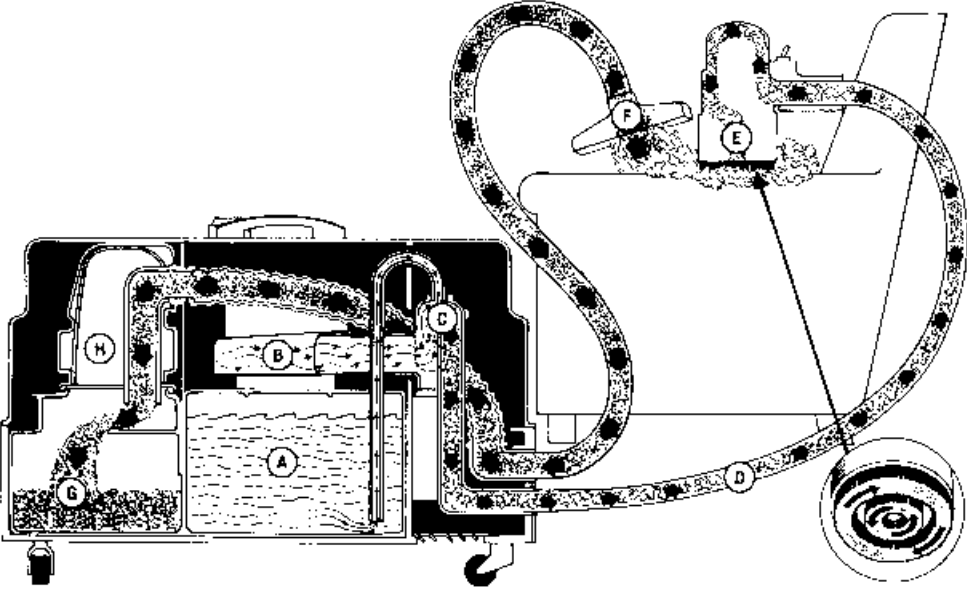


Grounding the Aridex Machine.

Introduction

Important!

Please read this manual in its entirety before using your new Aridex Upholstery Cleaning System. Work through each step and keep this book in a safe place for future reference.

 <p>WARNING: DISCONNECT FROM POWER BEFORE SERVICING</p>	<p>Caution: Do not overwet fabrics.</p>
<p>How the cleaning process works:</p> <ol style="list-style-type: none">1. Container(A) for special liquid detergent.2. Exhaust air from electric motor (B) travels to (C), where it mixes with detergent to produce dry foam.3. Dirt-dissolving foam (D) rushes to (E) brush head.4. Gentle outside brushes revolve in one direction while inside brushes revolve in the opposite direction. This double action separates greasy dirt from fabric and gives deep, thorough cleaning.5. Nozzle (F) of powerful vacuum removes dirt-laden foam from fabric.6. Foam with dirt held in suspension (G) arrives in dirt recovery tank.7. Air passes through filter (H) and (B) motor to air outlet at bottom of machine to complete the cleaning cycle. 	

System Overview

The Aridex Upholstery Cleaning Machine has been developed to give you a fast, economical method of upholstery cleaning. This versatile, portable machine has a number of unique features.

The Aridex machine has a powerful wet/dry vacuum to pre-vacuum the upholstery before cleaning. The machine converts detergent solution into a dry dense foam with only 10% moisture.

The unique brushing head, with counter rotating brushes and switch to control the amount of foam, loosens, breaks down and traps the soil. And because the foam is low-moisture, it only penetrates the fabric and not the backing materials. Once an area is clean, the built in vacuum removes the dirty foam and most fabrics are dry within 30 minutes.

The vacuum is a powerful 2-stage fan design. One universal motor in the power unit drives the vacuum and also makes the foam. A unique permanent magnet motor in the brush unit drives the cleaning brushes.

IMPORTANT: Save all the shipping containers and inner packing material. You will want to use them if it is ever necessary to ship your machine.

Power Supply

The power unit is available with two power supplies: 120 or 230 volts AC.

The permanent magnet motor in the brush unit is driven by 24 volt DC current supplied by the power unit.

Detergent Solution

The detergent capacity of the Aridex machine is two U.S. gallons (7.6 liters). Prepare Aridex Upholstery Detergent according to the instructions on the detergent container.

Caution: Avoid contact with eyes. (S25) Should eye contact occur, flush thoroughly with water. If irritation persists, consult physician. Not flammable. Personal Protective Equipment (PPE) not required. Non-hazardous per OSHA and EU guidelines when used as directed.

Disposal: Packaging may be recycled or landfilled according to Federal, State, and local regulations. Waste solutions typically must be disposed of in the sewer or in a wastewater treatment facility; please check your local regulations.

Always Test For Color Fastness First!

Identify a place where the fabric is exposed to wear and sunlight. The dye on some upholstery fabrics will begin to break down faster when subjected to these conditions. While the back of a chair may not show deterioration after cleaning, the front may fade because of this fact.

Wet a white cloth with detergent solution.

Rub the cloth on each color of the fabric. If any color rubs off on the cloth, it indicates that the colors in the fabric are not fast. **Do not attempt to clean a fabric that fails this fastness test!**

NOTE: Some fabrics may stand two or three cleanings, but will fade or "bleed" on the third or fourth cleaning. It is good professional practice to always make the fastness test even if you have successfully cleaned the fabrics in the past.

Important: Aridex Upholstery Detergent will not harm any color that is fast to water, but you may occasionally come across a very low grade or poor quality fabric which is not even color fast to water alone. Do not attempt to clean such fabrics!

Set Up & Cleaning Procedures

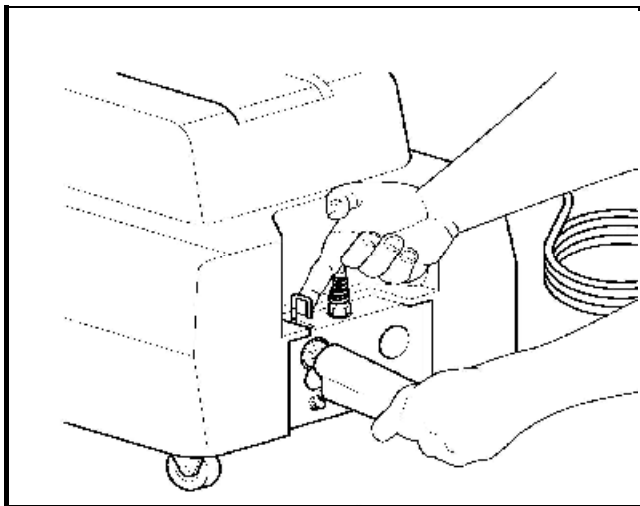
Preparation and Setup

Insert foam connector. The foam connector goes into the panel on the front of the power unit. Take care to align the electrical connections on this unit. Lift the connector and it will lock in place with a soft “snap”. To remove connector, lift the U-shaped latch located on the top of the panel and pull out the connector. The following figure shows the panel with all connections.

Insert vacuum hose coupling. Insert the vacuum hose in the panel.

Power cord. The machine is supplied with a 30-foot (9m) power cord. The cord is attached to the center of the front panel. The cord can be conveniently stored by wrapping tightly around upper half of the hood.

Fill the detergent tank. Unscrew the detergent tank cap on the top of the power unit. Using the filling funnel, pour no more than two U.S. gallons (7.6 liters) of diluted detergent into the tank (see Aridex Upholstery Detergent label for instructions). The tank is full when detergent reaches the bottom of the filler tube. **DO NOT OVER-FILL.** Replace the cap tightly to insure proper foam generation.



Add Aridex Defoamer solution to recovery tank.

- 1) Remove hood by retracting the latches on the hood handle and lifting up the hood.
- 2) Remove filter housing by pulling the top of filter housing straight back.
- 3) Mix Aridex Defoamer solution per label instructions and add about 1/2 cup of solution to recovery tank.
- 4) Then, replace filter housing and hood.

Controls. On the front panel of the power unit is the main power switch. Make sure that the brush unit switch is OFF before activating the main power switch. The vacuum, foam, and brushes are controlled by the switch on the brush unit. You may use the vacuum when the brush unit is in either the OFF or ON position. **DO NOT** vacuum when the brush unit is in the FOAM position because the same air used to vacuum is also being used to make foam. Using the vacuum while generating foam will restrict airflow and result in reduced foam output.

The brush unit runs in either the ON (dry) or FOAM position. You may switch back and forth freely from one setting to the other to control the amount of foam being produced.

A unique design forces the foam to flow around the motor case inside the brush unit. This circulation helps keep the foam warm and cools the motor.

Underneath the hood, is a reversing switch to change the direction of rotation of the cleaning brushes. Changing the direction of rotation at the beginning of each day (or after each 8 hours of running time) helps keep the cleaning brushes from taking a “set” in one direction, and will greatly increase the life of the carbon brushes in the brush unit motor.

CAUTION: Do not reverse brush unit rotation while the brush unit motor is running. Doing so may demagnetize the permanent magnets in the brush motor.

Storing brush unit. Take care to keep foreign objects from contacting the brushes while storing or transporting the machine. Failure to protect the brushes may result in the bristles taking a distorted set.

Brush unit side handle. The side handle offers added control and helps reduce operator fatigue. It can be mounted on either the right or left side of the brush unit. Unscrew button cap on right or left side of brush unit and screw in side handle. Store the button cap in a safe place.

Use the waterproof mat. Place the waterproof mat under the Aridex machine to protect your work area.

Prevacuum the fabric. Always vacuum the fabric well before cleaning to remove all loose dust and dirt. Brushes and combs can help loosen soil.

Cleaning the Fabric

Turn the power unit switch to the ON position.

Turn the brush unit switch to the FOAM position.

Apply foam to about 2 feet by 2 feet (.4m²) of fabric at a time and brush the area with the brush unit. Use both horizontal and vertical motions. Let the brush unit do the scrubbing while you slowly guide it.

NOTE: Excessive foam does not aid in cleaning. If an excessive amount of foam starts to build up, simply place the brush unit switch in the ON (dry) position. You will be able to easily regulate the amount of foam by moving the brush unit switch back and forth between the ON and FOAM positions.

Heavily soiled areas: You do not need to apply more pressure to the brush unit when cleaning heavily soiled areas. The revolving action of the brushes is enough to clean the fabric. If area does not come clean with brushing, use Aridex Pre-Spray.

Leave the foam on the fabric for a total of 2 to 3 minutes, including brushing time.

NOTE: Heavier fabrics will withstand more brushing than will delicate fabrics.

When one section has been cleaned for about 2 minutes, turn the brush unit OFF. Turn the vacuum on and remove the dirty foam from the fabric by vacuuming thoroughly.

NOTE: It is very important to have the brush unit switch in the OFF position when vacuuming because the strength of the vacuum is greatly decreased when the brush unit is running.

As you are learning the cleaning technique, especially during your first few cleaning jobs, check frequently for wetting of the filter bag. When this bag gets wet it allows liquid into fans and the motor, which will in time ruin the motor bearings. The bag will get wet if you are using improper cleaning technique. If the filter bag is getting wet, brush the foam more before vacuuming, or use less foam.

With good technique, dust and dirt will collect on the filter bag with little or no foam buildup in the recovery tank. If the bag gets wet during cleaning, remove the filter housing from the machine and clean it. Rinse the filter bag, shake out excess water, and replace it. Then run the power unit motor for 1 minute to dry the filter.

Drying Time

We recommend allowing furniture to dry completely before use. Most fabrics will dry within 30 minutes. However, fabrics vary in drying time and some may take up to 10 hours to dry. Factors affecting drying time include the type of fabric, relative humidity, and air circulation.

Cleaning Sofas

The average three-cushion sofa can be cleaned in less than one hour. Follow these steps:

Tip the sofa forward so you can clean the back side while standing upright rather than while bending or kneeling. Because the back of the sofa receives minimal soil, you will be able to clean larger sections at one time.

Clean the arms and sides of the sofa next.

Clean the front and top surfaces next.

Any fringe or apron bordering the bottom of the sofa can be held with one hand and cleaned while holding the brush unit in your other hand.

Clean the cushions last. Place them on top of the waterproof mat and clean the outside edges along with either the top or bottom. Vacuum the foam, turn the cushion over, then clean the opposite side. The brush unit's light weight allows you to control the cushion with one hand while cleaning it with the brush unit in your other hand.

Cleaning Chairs

A large upholstered lounge chair can be cleaned in 15 minutes or less.

If practical, tip the chair forward so it will support itself on its arms. This allows you to clean the back side while standing upright rather than while bending or kneeling. Because the back of the chair receives minimal soil, you will be able to clean larger sections at one time.

Place the chair on its side on the waterproof mat, allowing you to work from a standing position. Clean one side, then turn the chair and clean the other side.

Turn the chair upright and clean the front and top surfaces next.

Any fringe or apron bordering the bottom of the chair can be held with one hand and cleaned while holding the brush unit in your other hand.

Clean the cushion(s) last. Place them on top of the waterproof mat and clean the outside edges along with either the top or bottom. Vacuum the foam, turn the cushion over, then clean the opposite side. The brush unit's light weight allows you to control the cushion with one hand while cleaning it with the brush unit in your other hand.

Velvets

All colorfast fabrics are cleaned alike. For best results, velvets require thorough brushing with a clean nap brush.

Identify the direction of the lay of the pile before cleaning.

Brush the pile with the nap brush as soon as the foam is vacuumed from one section. Brush gently but thoroughly, so the pile lays all in the same direction as it did before cleaning.

If you fail to brush velvets well they will tend to mat down and appear rough. This is especially true of antique velvets.

Use a hair dryer to shorten drying time.

Haitian Cotton

The fiber composition of Haitian and Tahitian cotton presents a unique cleaning challenge. These fabrics should only be cleaned using Aridex Haitian Cotton Upholstery Detergent Concentrate to avoid bleeding. Refer to the Accessories & Supplies section in this manual for more information.

Cleaning Fabric Covered Wall Dividers

Many commercial and industrial areas are divided by fabric covered vertical panels. The dry foam and light brushing action of the Aridex Upholstery Cleaning System is ideal for cleaning these vertical panels.

Starting at the bottom of the panel, apply foam over sections about 2 feet by 2 feet (0.4m²).

Vacuum quickly. Allowing foam to set very briefly prevents fabric from becoming overly damp and speeds drying.

For best results, always work from bottom to top.

Auto Interiors

The Aridex Upholstery Cleaning System safely, quickly, and conveniently cleans all fabrics used in automobile interiors. These include velours, woven fabrics, prints, textured patterns, and even leather.

The Aridex Upholstery Cleaning System's innovative design allows you to use the compact, easily handled brush head and vacuum nozzle even in hard to reach locations, while the power unit remains out of the way outside the vehicle.

Leather

Aridex Leather Upholstery Cleaner and Aridex Leather Upholstery Conditioner are specially formulated for use on smooth finished leather furniture and vehicle interiors. Do not use these products on suede or unfinished leather. Refer to the Accessories & Supplies section in this manual for more information.

Tips for Professional Cleaners

Cleaning Tips

Using a hair dryer can help speed drying time especially on dense fabrics like velvet or velour.

Be sure to point out worn spots or faded colors to your customer before beginning cleaning. Such spots will be more noticeable after cleaning is complete.

When cleaning fabrics with heavy soiling in localized areas, start by applying Aridex Pre-Spray. Clean the heavily soiled areas first, then start over and clean the entire piece. This results in the heavily soiled areas being cleaned twice.

Special Considerations

Synthetics of all kinds or blends of different fibers can present special cleaning challenges. It is therefore difficult to promise that you will be able to remove every spot on a piece of upholstery. When necessary, pre-treat with Aridex Spot Remover.

Carefully inspect and test all upholstery before cleaning.

Ask the following important questions before starting:

How old is the furniture?

Has it ever been cleaned, either professionally or by a home method?

In what type of fabric is it covered?

Where is the piece kept and what are the soiling conditions there? For example, soiling conditions in a cafeteria or office location will be different than those in most living rooms.

Is the furniture subject to heavy smoke, grease, or sunlight?

Is the piece located near a radiator or heat vent?

Check the pieces to be cleaned for unreported problems. Record all rips, tears, snags, missing buttons, or worn areas. Record all existing damage and discuss your findings with your customer.

Vacuum the upholstery against the lay of the nap. Use a crevice tool if needed. Be careful not to loosen buttons.

Always test for color fastness.

If the fabric fails the color fastness test, notify the customer that the piece cannot be cleaned without the risk of damage. If the customer wishes to have you clean the piece despite the risk of damage, obtain approval in writing before starting work.

Never give an estimate over the phone.

Don't forget about other services you can offer, such as mattress cleaning, RVs, boats, trailers and other unique cleaning opportunities.

Fabrics

Identifying Fabrics

Fabrics are classified in two ways: by weave and pattern, or by the origin of the fiber (for example, natural or man-made). For cleaning purposes it is the second classification system that is most important.

The basic types of weaves or patterns are plain, twill, and satin. Weaves can also be classified as flat or pile.

Flat fabrics have a flat surface formed by weaving yarns at right angles to one another. Velvets and mohair have a surface made up of fibers standing on end like the pile of a rug.

Even though most fabrics are cleaned the same way, the following descriptions of the most common types of fabrics may be helpful.

Artificial leather - Fabric coated with nitrocellulose and embossed, then colored to look like leather. Clean this with Aridex Upholstery Detergent and follow with and application of Aridex Leather Upholstery Conditioner.

Bouclé - A rather flat looking material with a surface made up of yarns with knots and spirals. No regular pattern. Surface yarns do not cover the entire face, but are irregularly placed to leave parts of the surface open. A flat fabric made of wool, cotton, rayon, or a blend.

Brocade - A figured material in which the design is woven in relief against a foundation of a different weave. Whereas damask has a very flat pattern, brocade has a slightly raised or "embossed" pattern. This is produced by using yarns of different colors or by exposing contrasting surfaces of the same color yarns.

A flat fabric originally woven of gold and silver silk threads, but now made of silk, cotton, rayon, or a combination of cotton and rayon in various colors.

Brocatel or Brocatelle - Similar to brocade, but the pattern stands out in high relief and is much more noticeable above the surface than in brocade. Pattern has a "blistered" appearance. The blistered areas have a double back. This is a flat pattern.

Chintz - A printed cotton fabric that is quite often glazed. Chintz cannot be cleaned because any moisture removes this glaze. The base fabric is a simple flat weave, usually a sheeting. Printed pattern usually consists of small, lively figures or large motifs. Used most often for draperies and slipcovers.

Corduroy - Characterized by a definite corded or ribbed appearance. While corduroy resembles a velvet fabric, it is a flat weave. The corded or ribbed effect is produced by floating an extra set of filling yarns over the surface, then cutting these yarns so they stand up like tufts. These tufts are then teased, singed, and brushed. Corduroy is generally made of cotton or mercerized cotton.

Crash - A simple, flat weave characterized by a surface of coarse yarns woven in an uneven texture. Made of cotton or linen, sometimes combined with jute.

Damask - Material with reversible pattern which changes color on the reverse side. Whereas the pattern of a brocade is raised, the pattern in a damask is very flat. Linen tablecloths are characteristic of the damask weave. Upholstery damasks are made of silk, cotton, linen, wool, rayon, mercerized cotton, singly or in combination. High quality damasks are very tightly woven.

Embossed fabrics - These can be either flat fabrics or velvets. Flat fabrics and various weaves are embossed by running them between engraved rollers. Plain velvets of mohair, rayon, or cotton are sometimes embossed, then sheared and brushed to bring up the pressed pile to form a design.

Frieze velvet - A plain frieze velvet has a solid surface of loops extending upright from the base of the fabric. Differs from a plain cut velvet in that the upright yarns are turned back into the base of the fabric to form loops instead of being cut to form erect yarns. A cut and uncut frieze velvet is a combination of plain cut and frieze velvets in that some of the surface yarns are looped, while others have been cut to stand erect. Many interesting patterns are developed in this way. Woven on special wire looms with Jacquard attachments.

Plain frieze velvets, cut, and uncut frieze velvets are attractive and durable. They are made of mohair, cotton, rayon, silk, linen, and wool, singly or in combination.

Fur fabric - A general class of high pile velvets made to resemble animal fur. The effect is obtained by printing or cutting. Suitable for modern furniture. Mohair, alpaca, and tussah (wild) silk are used for the pile.

Hair cloth - A stiff fabric woven with horse hair. Often combined with other fibers, and used for period furniture. Sometimes has small designs.

Haitian cotton - A fabric woven from imported cotton to include tan or brownish seed pods as part of the texture and color. When cleaned conventionally, these nubby spots tend to bleed unless special precautions are taken. Aridex Haitian Cotton Upholstery Detergent greatly reduces the risk of damage.

Homespun - A flat fabric, very loosely woven and made of rough, coarse yarns. Generally made of cotton or a combination of cotton and jute. Machine reproductions of fabrics originally made by hand for clothing, but using heavier yarns.

Jacquard - Woven velvet or flat fabrics that are patterned. Because of the nature of the pattern, they cannot be produced on plain looms. The patterns of Jacquard fabrics are sometimes quite elaborate and complicated.

Leather - Smooth finished leather can be cleaned safely with Aridex Leather Upholstery Cleaner and Aridex Leather Upholstery Conditioner. It is not recommended to clean unfinished leather or suede.

Matelasse - Woven flat fabric of the brocade type. In matelasse the design looks "quilted" rather than "embossed".

Pile fabrics - Three dimensional velvet fabrics with an extra set of yarns woven at right angles to the base to form an erect surface. The upright yarns can be mohair, wool, cotton, silk, mercerized cotton, linen, or rayon. Rich looking and durable

Plush - Velvet pile fabrics with a rather open pile surface over 1/8 inch (3.2mm) high. In most instances, modern, low pile velvets have replaced plushes.

Print - Print is a general term to describe flat or velvet fabrics having a printed pattern.

Ratine - A flat tapestry weave material with a characteristic surface made of nubbed or knotted yarns loosely woven to give a bumpy appearance.

Satin - A very lustrous flat fabric usually made of silk with a cotton back in plain, damask, or brocade weave. Sometimes mercerized cotton or rayon is used instead of silk.

Serge - A flat fabric woven with a twill (diagonal) weave. May be wool, cotton, or linen.

Taffeta - A fine, closely woven flat fabric with a smooth surface. Made with backing and filling yarns of the same thickness, giving a very even appearance. Woven of silk or rayon and cotton.

Tapestry - A flat fabric that is usually figured and multi-colored. Woven on a Jacquard loom. Made of different types of colored yarns, singly or in combination. Originally made by hand with bobbins worked from the wrong side. In a machine-made tapestry, the wrong side is smooth. In a handmade fabric it is shiny.

Velour - The word velour is French for velvet. This is a general name for velvet fabrics with a pile of cotton, rayon, or silk. Used for draperies. Usually called velvet when applied to upholstery fabrics.

Velvet - General name for fabrics with a pile surface or "third dimension" made up of erect yarns woven at right angles to the base. Pile height is less than 1/8 inch (3.2mm). Surface yarns are silk, cotton, or rayon. Mohair velvet is velvet with a surface of mohair yarns. Cotton velvet is velvet with a surface of cotton yarns. Rayon velvet is velvet with a surface of rayon yarns, and so on.

Velveteen - A low-priced cotton flat fabric with a false pile made with an extra set of filling yarns which are cut and brushed to simulate a pile. Made the same way as corduroy, but the surface is not ribbed.

Common Upholstery Fabrics and Fibers

Fabric Type	Characteristics	Cleaning Cautions
Cotton	Highly absorbent fiber	Stronger when wet than when dry
Haitian Cotton	Highly absorbent natural fiber that contains visible tan or brown seed pods	If backed with latex, use caution when spotting
Linen	Very strong, highly absorbent natural fiber	Highly absorbent natural fiber with excellent fastness
Nylon	Extremely strong, durable synthetic that cleans and dries easily	Few, if any, serious disadvantages
Olefin	Durable, almost completely stainproof fiber with a low water absorbency rate, and excellent fastness. Often called Herculon	If backed with latex, use caution when spotting
Rayon	Highly absorbent synthetic fiber with excellent fastness	If overwet, dyes have a tendency to brown
Silk	Extremely strong natural fiber	Sheen may be lost in cleaning Acid cleaners or spotters must be thoroughly removed with rinsing
Velvet	Not a fiber, but a weave	May be composed of many different fibers so prior testing is essential
Wool	Very strong natural fiber that is moderately absorbent	Whites may brown if overwet

Spot & Stain Removal

For best results, spots and stains should be removed before they dry and become “set”. The older they are, the harder they are to remove.

Oily materials such as butter, grease, oil, hand cream, or ball point pen ink: Remove excess materials by blotting liquids and scraping up solids. Apply Aridex Spot Remover. Dry the fabric by blotting; repeat with Aridex Spot Remover if necessary. Blot dry and brush pile.

Oily foods, animal matter, coffee, tea, milk, gravy, chocolate, salad dressing, ice cream, sauces, eggs or vomit: Remove excess materials by blotting liquids and scraping up solids. Apply Detergent/Vinegar/Water solution (described later in this section). Blot dry and apply Aridex Spot Remover. Spot dry. Blot dry and brush pile.

Blood: Blot with cold water. Sponge with cold water and Aridex Upholstery Detergent solution. Blot again with cold water. Repeat if necessary.

CAUTION: Using warm or hot water on blood will “set” the stain.

Foods such as starches, sugars, mustard, candy, drinks, fruit stains, washable ink, and urine: Blot up liquids and scrape up solids. Apply Detergent/ Vinegar/Water solution (described later in this section). Blot dry. Apply Aridex Spot Remover and blot dry. Repeat if necessary.

Paint, grease, gum, lipstick, crayon, tar: Carefully scrape up as much as possible. Blot with Aridex Spot Remover. Work from the edge toward the center of the spot. Change blotting cloth often to avoid resoiling. Repeat if necessary. Blot dry and brush pile.

Caution: Never rub, as doing so will cause the spot or stain to spread.

Detergent/Vinegar/Water solution: Prepare one teaspoonful of Aridex Upholstery Detergent Concentrate by mixing it with a small amount of hot water, then stirring it vigorously to a syrup-like consistency. Add to one quart (950ml) of warm water. Then add one teaspoonful of white vinegar and stir.

Aridex Accessories & Supplies

C1802 Aridex Upholstery Detergent Concentrate-

Specially formulated detergent to deep clean all upholstery fabrics excluding Haitian cotton. Creates dry dense foam that breaks down and traps soil for instant removal.

C1803 Aridex Defoamer Concentrate - Breaks down buildup of foam in the recovery tank.

C1804 Aridex Haitian Cotton Upholstery Detergent Concentrate - Specially formulated detergent to deep clean Haitian and Tahitian cotton without causing bleeding or browning. Creates dry dense foam that breaks down and traps soil for instant removal.

C1805 Aridex Pre-Spray Concentrate - Pre-spray to loosen stubborn dirt, especially in heavy use areas.

C1806 Aridex Fabric Protector - Specially formulated spray to repel oil and water based stains and spills. Fast-drying and will not cause re-soiling or change the "hand" of the fabric. Safe for all colorfast material.

C1807 Leather Cleaning Combo Pack - Contains Aridex Leather Upholstery Cleaner Concentrate, Aridex Leather Upholstery Conditioner and handy application mitt.

C1808 Aridex Leather Upholstery Cleaner Concentrate - Specially formulated detergent to effectively clean all types of smooth, finished leather furniture and vehicle interiors. Do not use on suede or unfinished leather.

C1810 Aridex Leather Upholstery Conditioner - Conditions, moisturizes and protects all types of smooth, finished leather furniture and vehicle interiors. Use after cleaning with Aridex Leather Upholstery Cleaner. Do not use on suede or unfinished leather.

C1811 Aridex Spot Remover - Specially formulated to remove stubborn spots including grease, gum, drinks, pet accidents and blood. Can be used on oil and water based stains.

C1812 Aridex Odor Eliminator Concentrate - Destroys bad odors from pets, saturated stale food odors, smoke odor, mold and mildew. Not a perfume or masking agent.

D90A Spot Brush - Wooden handle with soft natural bristles. 7 x 1.5 inches (17.8 x 3.8 cm). Brush area of 2.5 x 1.25 inches (6.3 x 3.2 cm).

D91B Nap Brush - Used to lift and restore the nap after cleaning. Wooden handle with soft natural bristles. 9 x 1.5 inches (22.9 x 3.2 cm) Brush area of 6 x 1.25 inches (15.2 x 3.2 cm)

U1910 Velvet Brush - Nylon-bristled hand tool for grooming fabrics such as velvet and velour.

D110C Waterproof Mat - 3 x 4 foot durable, woven plastic mat for use under the Aridex machine to protect your work area.

C1935 Sprayer - Convenient quart (32 oz.) capacity sprayer for application of Aridex Pre-Spray or Aridex Odor Eliminator.

D92D Graduated Cup - Quart size (32 oz.) plastic measuring container with molded pour spout.

U1902 Tote Bag – Ideal for accessories used with the Aridex Upholstery Machine.

Maintenance Procedures

IMPORTANT

Please Read Very Carefully

CAUTION: Always disconnect the machine from electrical supply when working on it.

This section has been prepared by the Racine Industries Repair Department. It is made available for use by others with no liability accepted for user safety or damage to equipment resulting from its use.

For additional information regarding trouble-shooting and repair of this equipment please contact Racine Industries.

Refer to the Part Lists/Wiring Diagrams at the end of this manual for assistance during troubleshooting and maintenance.

Brush Unit

The power unit supplies low voltage direct current to the brush unit. The brush unit contains its own control switch for motor and the air valve solenoid (which is located inside the power unit). If a problem should occur, check both the power unit and brush unit to locate the cause.

CAUTION: Serious damage of the brush unit motor may occur if the reversing switch is moved while the brush unit is running.

A significant increase in the "no load" speed of the brush unit motor, along with a reduction in torque, will indicate that this has happened. If this happens, then the unit should be sent to the factory for repair.

At normal operating temperatures, the brush unit motor runs at about 9,000 RPM and the center brush drive shaft turns at 740 RPM. If demagnetization has occurred, the motor speed will increase to about 12,000 RPM, and the drive shaft to 1,000 RPM.

CAUTION: In cold weather, brush units, which have been exposed to below freezing temperatures for an hour or more should be brought to room temperature before use. This will minimize the possibility of damage to the permanent magnet.

Remove Power Unit Hood

Remove hood by retracting the latches on the hood handle and lifting up the hood.

Filter Housing/Recovery Tank

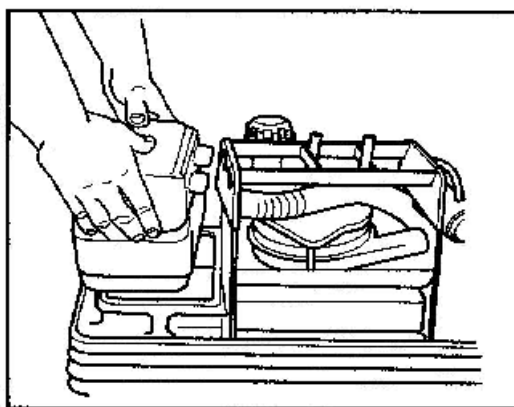
Installing Filter Housing

Place filter bag assembly into filter bag housing.

Set filter bag and housing assembly onto bottom recovery tank. Place palms of hands onto top of filter housing and push down and forward until the nozzles of the filter housing snap into the sockets on the frame assembly.

Removing Filter Housing

Push down and pull filter housing straight back (see illustration below)



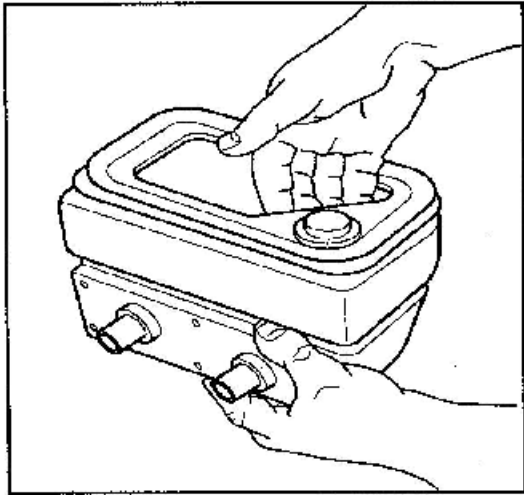
Cleaning The Filter Bag

Never operate your Aridex Upholstery Cleaning System without first making sure the cloth filter is in place. Running the machine without the cloth filter may ruin the power unit motor.

Keep the filter bag clean.

The filter bag and frame are held in place in the housing by a rubber grommet on the frame which fits over a metal tube. To remove the frame assembly:

Pull out on the frame at a point adjacent to the tube (see figure below).



Clean the filter bag thoroughly by turning it inside out and brushing it clean.

Wash the filter occasionally to remove built up soil.

NOTE: Keep filter bag from becoming wet during use. Wetting of the bag can allow liquid into fans and motor, which over time will ruin the motor bearings. A wet bag is the result of improper cleaning technique. If the filter bag is getting wet, do more brushing of the foam on the fabric before vacuuming or use less foam.

Remove any liquid from the recovery tank before transporting the machine. The filter could get wet without doing this.

A good cleaning technique will result in dust and dirt collecting on the filter bag with little or no foam in the recovery tank.

The large volume of air passing through the unique vacuum system breaks down and dries the dirty foam on its way to the recovery tank. If the bag has become wet during use:

If Filter Bag Should Get Wet

Shake out excess water.

Run power unit motor for one minute to dry bag.

Cleaning The Recovery Tank

Clean the recovery tank after each use or every 3 to 4 hours during continuous cleaning. To do so:

Remove hood.

Remove filter housing.

Lift recovery tank from machine.

Clean thoroughly and rinse with fresh water.

Replace cover.

Flushing / Emptying Detergent Tank

The detergent tank should be emptied after each use.

Remove detergent tank cap on top of unit.

Remove tank drain cap on bottom of machine. (Important - empty tank over a floor drain or in a sink.)

Flush tank with fresh warm water.

CAUTION: DO NOT vacuum this water through the recovery system.

Cleaning The Vacuum Hose

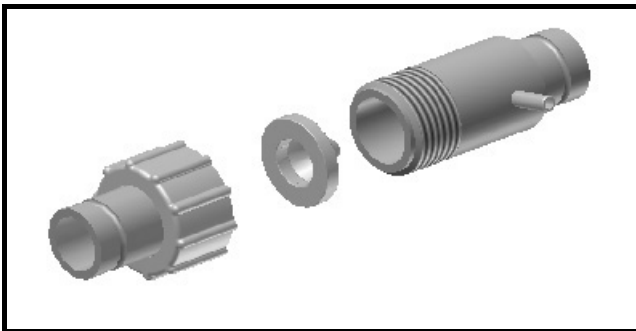
- Remove hose from machine
- Allow hose to dry thoroughly
- Tap along sides of hose to loosen dirt
- Shake out dirt and debris
- Rinse thoroughly with clear water
- Allow to dry, then replace on machine

DO NOT run motor to dry hose

Cleaning The Foam Generator

- Leave all hoses attached
- Unscrew retaining nut
- Remove screen and rinse with warm water
- Replace screen onto foam generator body
- Screw retaining nut onto foam generator

HAND TIGHTEN ONLY



Removing The Cleaning Brushes

- Pull the inner brush off the center shaft
- Pull the outer brush evenly from the three drive lugs.
- Reassemble by replacing the outer brushes first, then the inner brushes

NOTE: Take care to keep foreign objects from contacting the brushes while storing or transporting the machine. Failure to protect the brushes may result in the bristles taking a distorted set.

Replacing Carbon Brushes - Brush Unit

If the brush unit motor slows down or begins to run erratically, inspect the carbon brushes for wear. See pages 33 and 35 for an illustrated view.

Remove the access cap (#3) from the outer brush unit cover.

Remove the inner access cap (#29) from the brush unit housing.

Remove the carbon brush (#28) from the holder. **Caution:** Note the position of the bracket holding the carbon brush for reinstallation

Inspect the carbon brush and if the carbon is below 1/2", a new carbon brush should be installed.

Reinstall the carbon brush by compressing the spring and thread the inner access cap back into place.

Cleaning The Air Intake Screen

Keeping the intake screen clean allows the motor to run cooler and more efficiently.

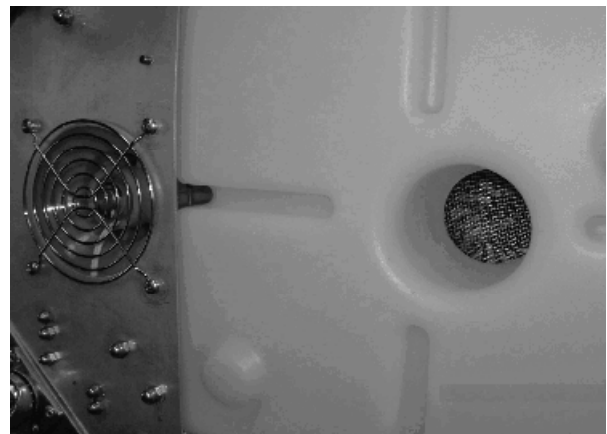
To clean the screen:

Empty the detergent and recovery tanks

Turn the unit on it's side

Looking up from the bottom of the machine, the screen is located in the middle of the detergent tank.

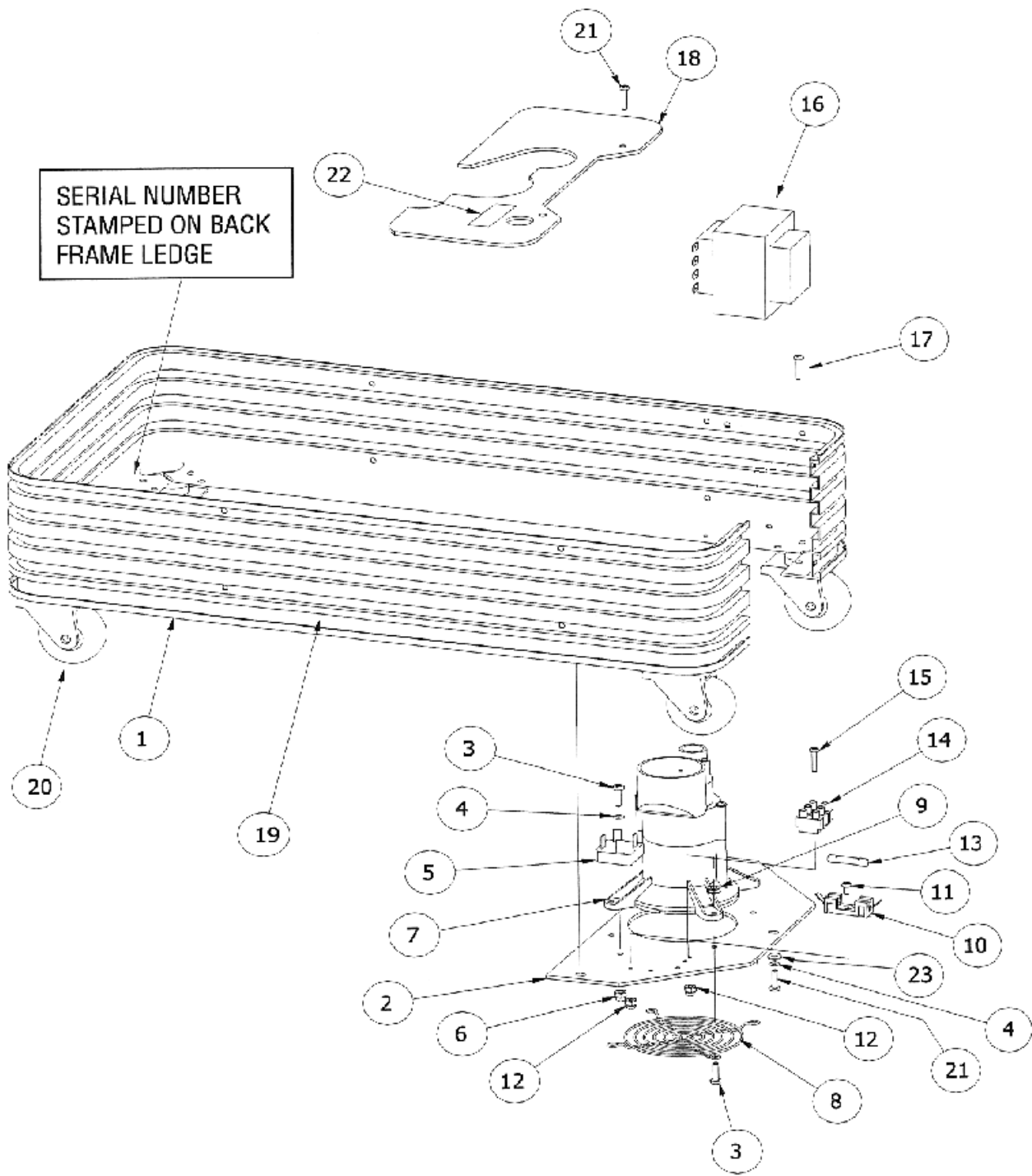
Using the supplied brush, or vacuum, gently clean the screen being careful not to push too hard on the screen.



Troubleshooting

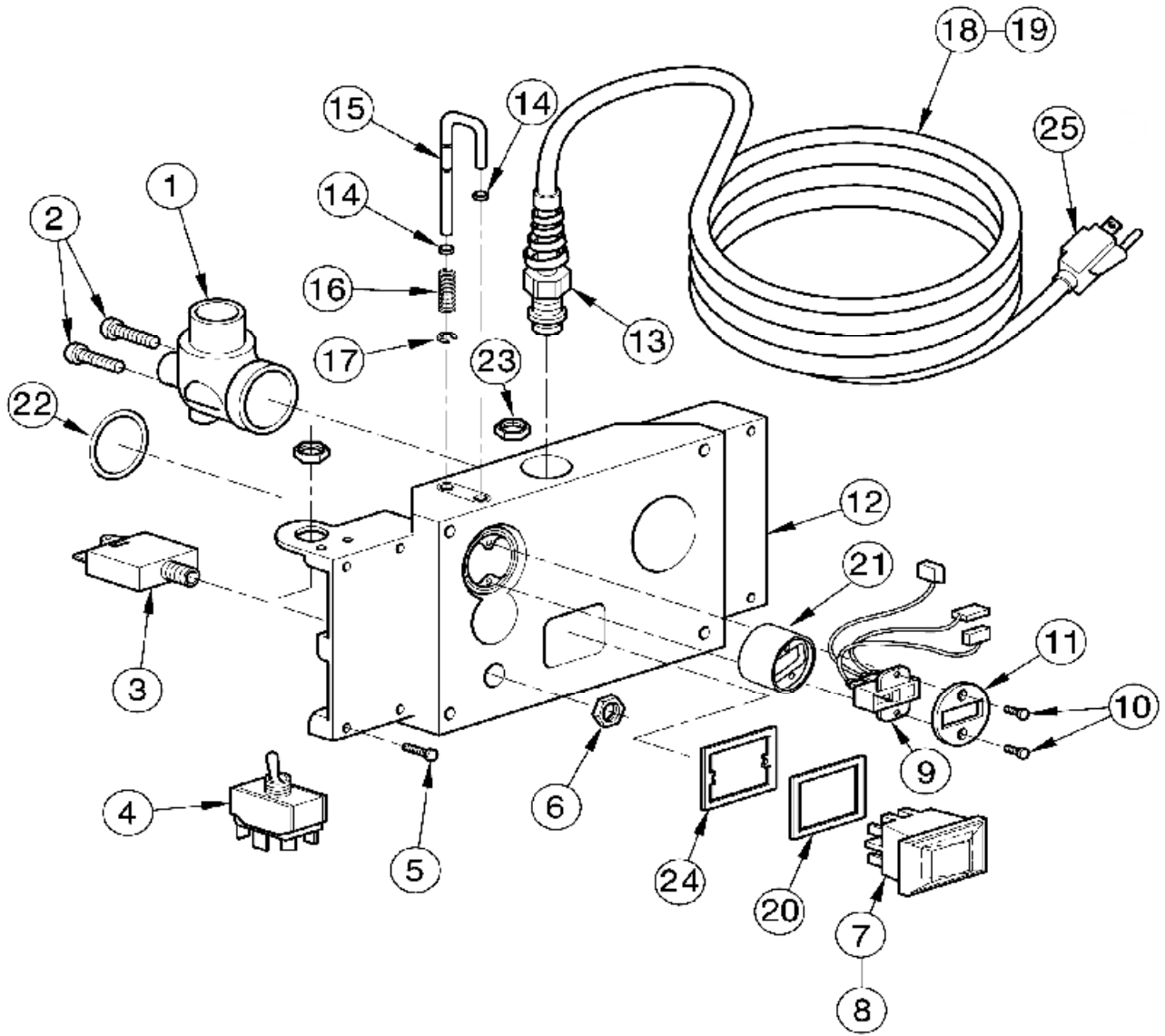
Trouble	Probable Cause	Solution
Low vacuum suction	Hoses improperly connected	Check and tighten hose clamp.
	Filter housing improperly positioned	Check and adjust position of filter housing.
	Filter bag clogged with dirt and lint	Clean filter bag.
	Hoses clogged with dirt and lint	Clean hoses.
	Low supply voltage	Check power supply and correct if necessary.
No foam/low volume of foam	Improper detergent solution mixture	Empty detergent tank and mix new solution per package instructions.
	Hard water	In areas with hard water, use a softening agent such as Calgon at the rate of about 1/2 cup per gallon (30ml per liter).
	Cap not sealed or broken on detergent tank	Check detergent tank cap and replace if necessary.
	Vacuum hose restricted	Make sure vacuum hose nozzle opening is not plugged.
	Two-channel hose kinked or improperly connected	Check for kinks or improper connection and correct if necessary.
	Foam generator plugged	Disassemble foam generator and clean.
	Low supply voltage	Check power supply and correct if necessary.
	Faulty solenoid	Replace solenoid (refer to Parts List(s)/Wiring Diagrams) or send unit out for service.
	Faulty switch on brush unit	Replace switch (refer to Parts List(s)/Wiring Diagrams) or send unit out for service.
Base Unit does not run	Bad main switch	Replace main switch.
	Bad motor	Replace motor.
	Supply cord damaged or disconnected	Check connection; if necessary replace cord.
	Bad wall outlet	Use different outlet
	Loose or faulty electrical connection	Tighten connection or repair wiring.
Brush unit does not run	Unit not properly connected to base unit	Check connection; if necessary reconnect to base unit.
	Faulty transformer	Replace transformer.
	Faulty rectifier	Replace rectifier.
	Blown fuse	Replace fuse.
	Faulty switch on brush unit	Replace switch.
	Faulty wiring on brush unit	Replace wiring.
	Worn carbon brushes	Replace carbon brushes

Parts Lists & Wiring Diagrams

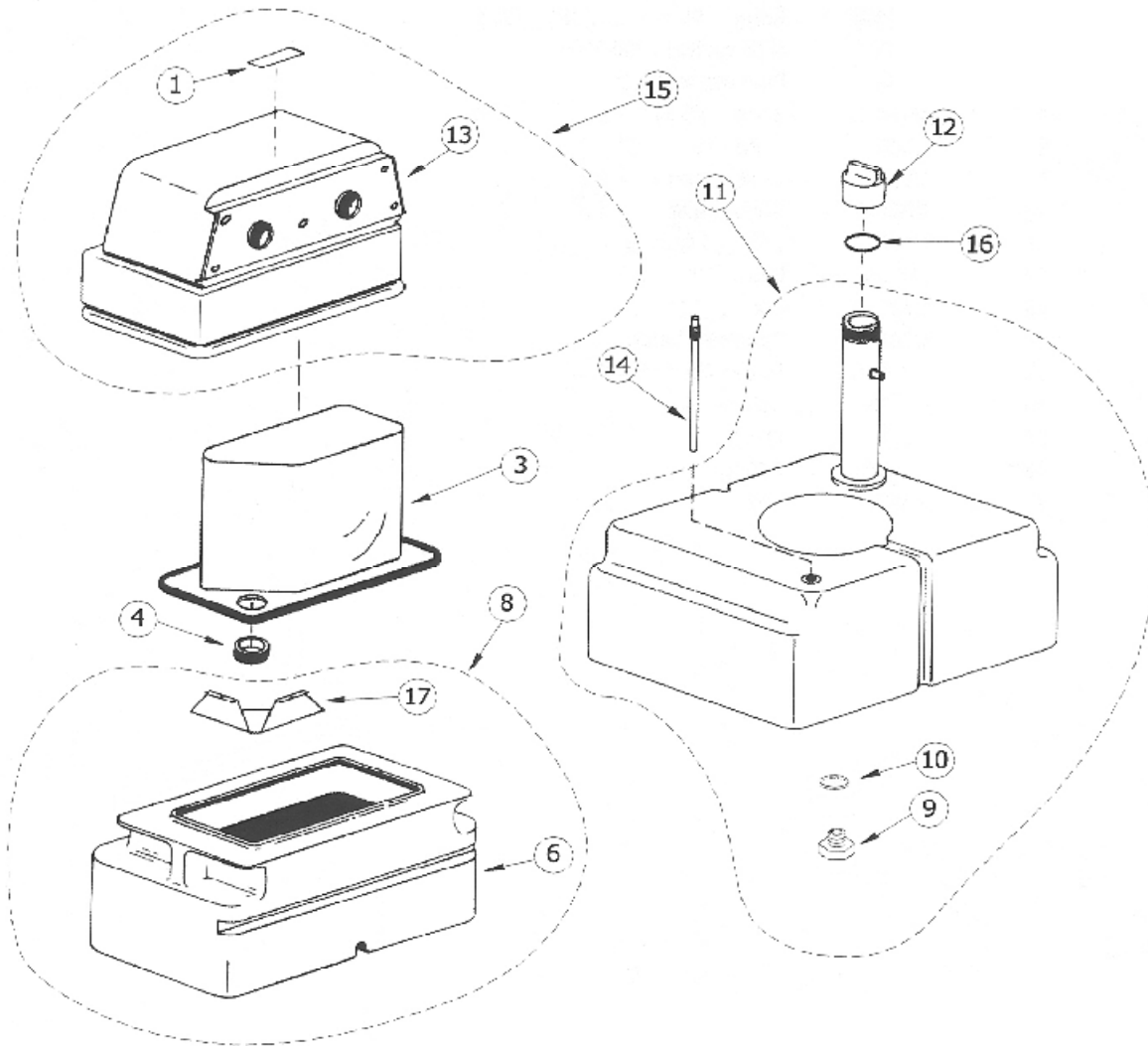


CODE NO.	PART NO.	DESCRIPTION
1	U160	Frame Assembly
2	U1370	Bottom Panel
3	U1391	#8-32 x 5/8 Phillips Pan Head Screw (5 REQ'D)
4	M5005	#8 Lock Washer (4 REQ'D)
5	U217	Rectifier
6	U1389	#8 Acorn Nut
7	U1354	Air Valve Assembly
8	U188	Grille
9	466A	#8-32 Nut KEPS (4 REQ'D)
10	H1007	Fuse Block (110v)
11	U1390	#6-32 x 5/16 Phillips Pan Head Screw
12	U1388	#6 Acorn Nut (3 REQ'D)
13	U374	Fuse
14	U1618	Terminal Block
15	U1392	#6-32 x 3/4 Phillips Pan Head Screw (2 REQ'D)
16	U189	Transformer
17	M50199	Screw - #8-32 x 5/8 (4 REQ'D)
18	U1369	Top Cover
19	U1395	Bumper
20	M14050	Caster (Included w/Code No.1)
21	D31A	Screw - #8-32 x 3/8 (5 REQ'D)
22	U109C	Label - Reversing Switch
23	U2032	Washer #8 Flat (3 REQ'D)
*	U1193	RFI Filter (220v)
*	U1194	Supression Capacitor Asm
*	U1619	Spacer - Transformer .200 Long (3 REQ'D)
*	U1620	Spacer - Transformer .300 Long

*** = Not Illustrated**

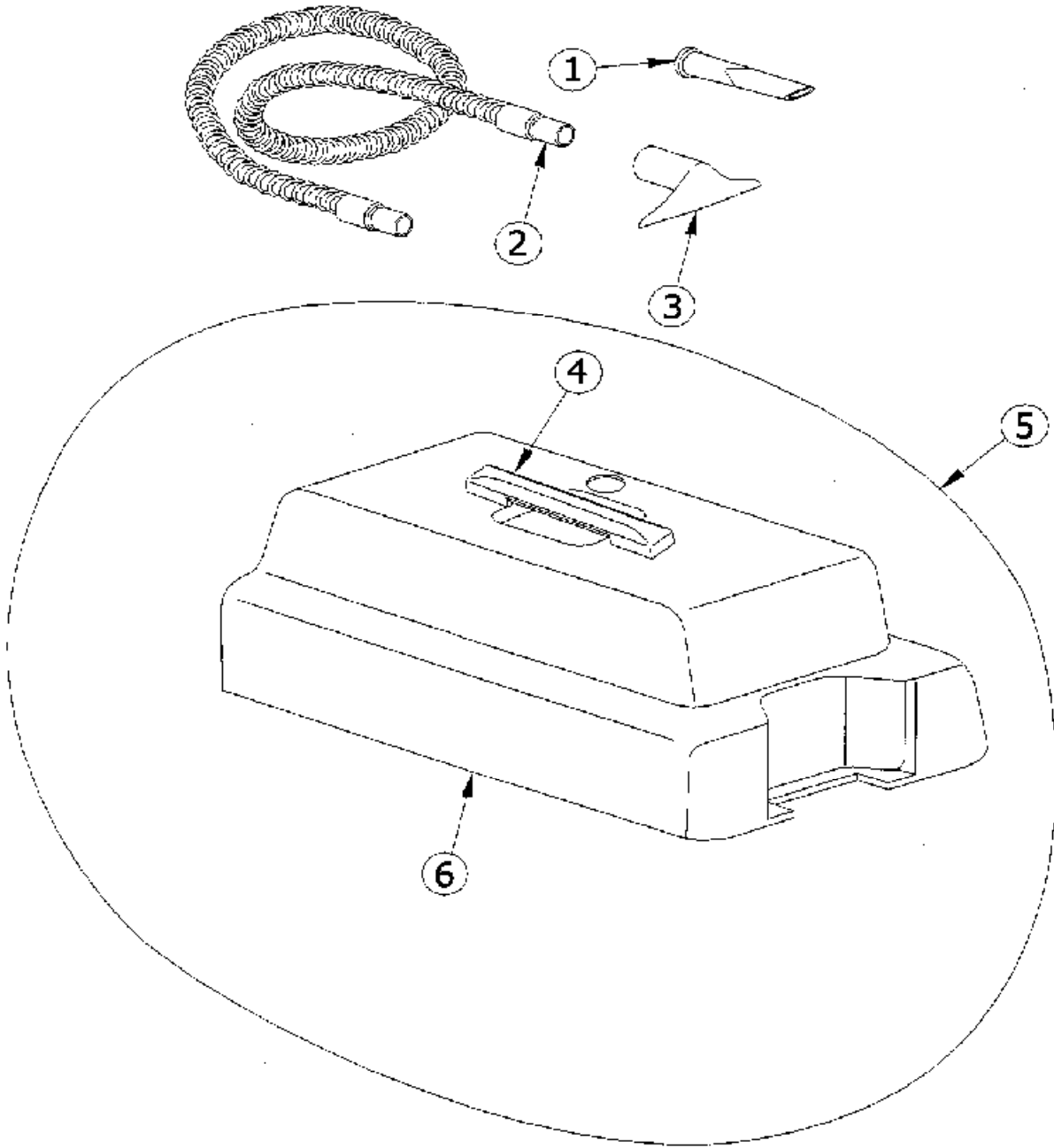


CODE NO.	PART NO.	DESCRIPTION
1	U230	Elbow - Control Panel
2	U216	Screw - #6-32 x 1 1/4 (2 REQ'D)
3	U1192	Circuit Breaker (220/240v only)
4	U220	Reversing Switch Assembly
5	M11008	Screw - #6-32 x 5/16 (8 REQ'D)
6	U1190	Nut - Circuit Breaker (220/240v only)
7	K1067	Main Switch - 100/120v
8	K1069	Main Switch - 220/240v
9	U380	Receptacle Assembly
10	M13015	Screw - #6-32 x 1 1/4 (2 REQ'D)
11	U389	Plate - Receptacle
12	U1394	Control Panel
13	M30057	Strain Relief
14	H1097	O-Ring, Latch (2 REQ'D)
15	U203A	Latch - Hand Tool
16	U205	Spring - Latch
17	U206	Retainer - Latch
18	U1101B	Power Cord - 100/120v
19	U1188	Power Cord - 220/240v
20	F4239	Gasket - Switch
21	U388	Insert
22	U1304	O-Ring (Included in Item 12)
23	F4077	Nut
24	K1093	Clip - Switch
25		Power Cord Plug
	M4163	Plug - European (220/240v only)
	M4206	Plug - UK - (220/240v only)
	M4181	Plug - Swiss - (220/240v only)
	M4241	Plug - Australia - (220/240v only)
	M4338	Plug - Israel - (220/240v only)
	M4344	Plug - Denmark - (220/240v only)
	M4343	Plug - Italy - (220/240v only)

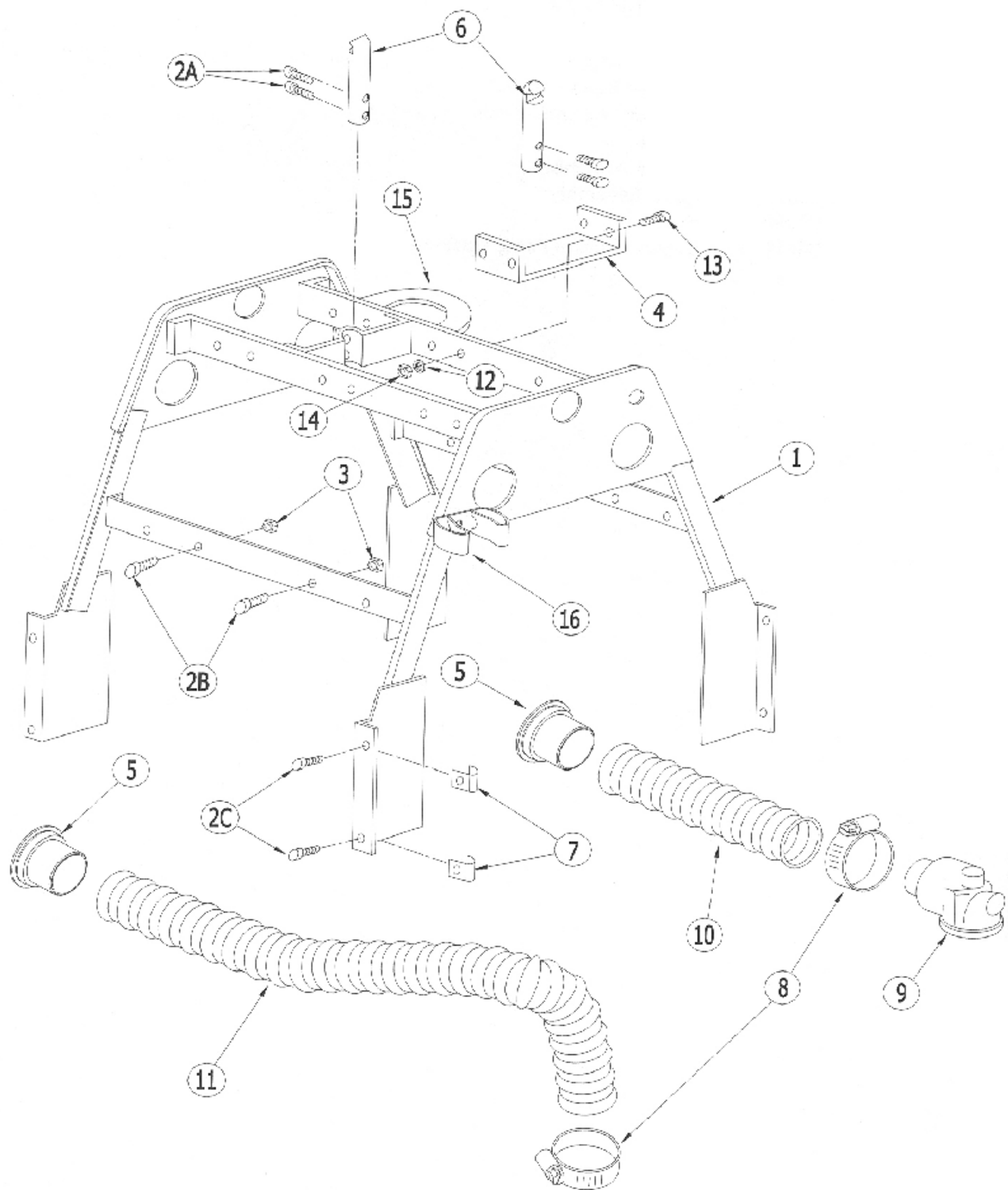


CODE NO.	PART NO.	DESCRIPTION
1	U908A	Decal - Filter Housing Removal
2*	U1579	Screw - 18-8 Flat Head (2 REQ'D)
3	U807	Filter Bag Assembly (Includes Code No.4)
4	U804	Grommet
5*	V703A	Screw - #4 x 3/8 (5 REQ'D)
6	U752	Recovery Tank
7*	U2038	Connector - Filter Housing (2 REQ'D)
8	U753	Recovery Tank Assembly
9	U1402	Tank Drain Plug
10	U1405	O-Ring - Tank Drain
11	U1050	Detergent Tank Assembly
12	U1034	Cap - Detergent Tank
13	U911	Face Plate Assembly - Filter Housing
14	U325	Sump Tube
15	U755	Filter Housing Assembly
16	U307A	Seal - Filler Cap
17	U702	Deflector

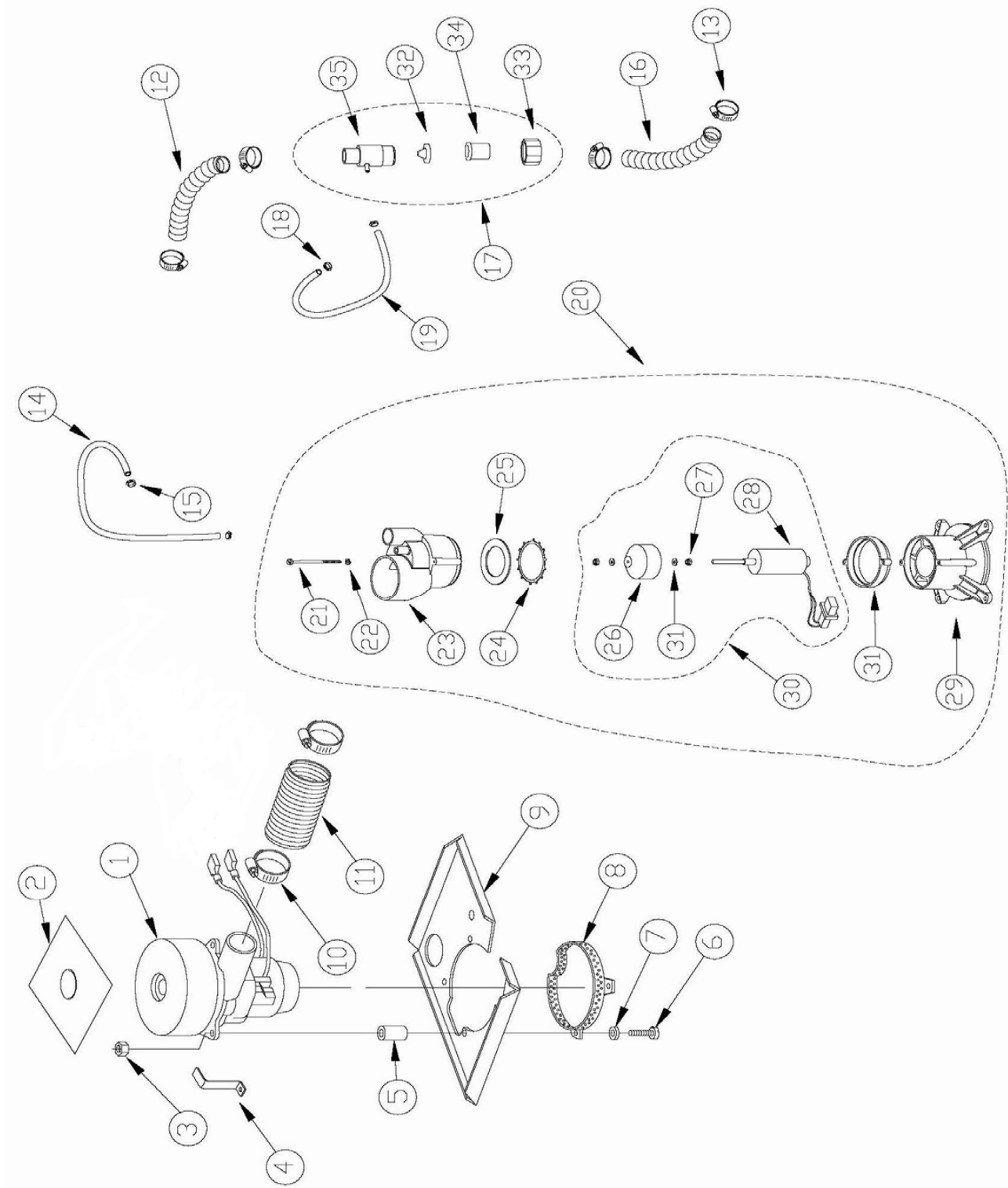
*** = Not Illustrated**



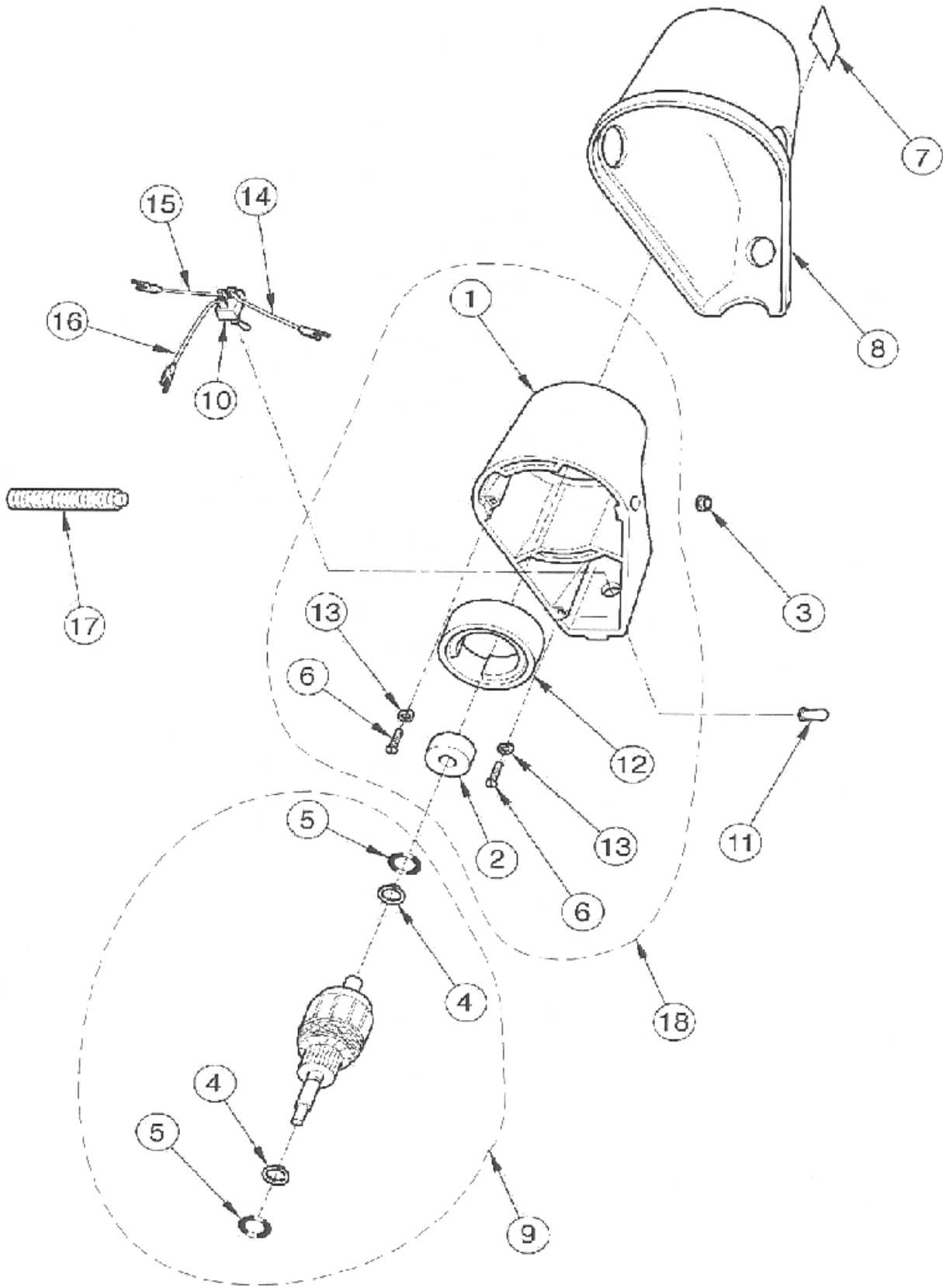
CODE NO.	PART NO.	DESCRIPTION
1	U1438	Crevice Tool
2	U1218	Vacuum Hose - 15 feet
3	U1437	Nozzle
4	U1035	Handle Assembly
5	U1374	Hood Assembly
6	U1368	Hood



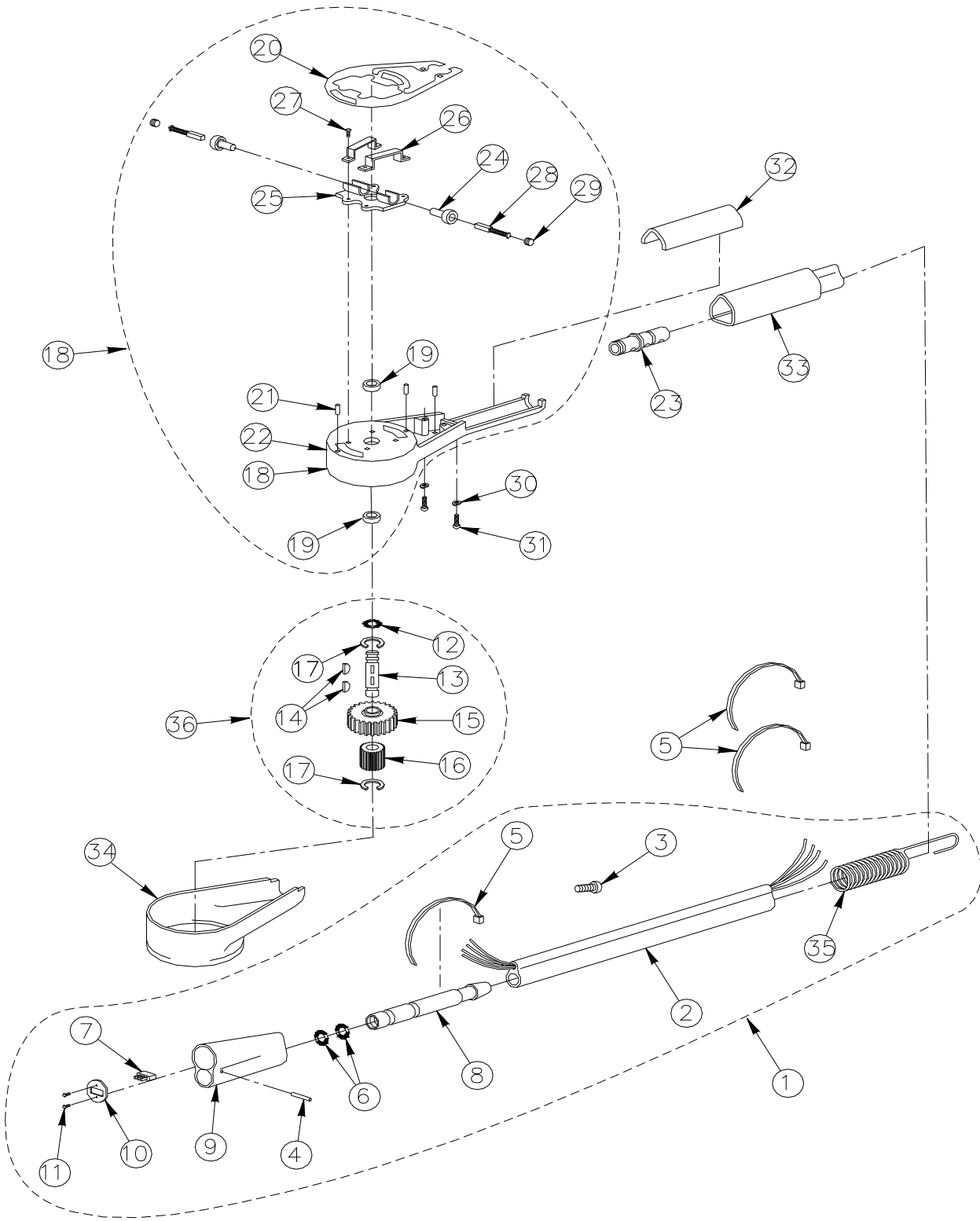
CODE NO.	PART NO.	DESCRIPTION
1	U1384	Sub Frame Assembly
2	D31A	Screw - #8-32 x 3/8 (16 REQ'D) 2A - Mounting Posts to Frame (4 REQ'D) 2B - Vac Motor Mounting Plate to Frame (4 REQ'D) 2C - Subframe Asm to Extruded Frame Asm (8 REQ'D)
3	466A	Nut #8-32 (4 REQ'D)
4	U1168	Holddown Bracket
5	U2039	Socket (2 REQ'D)
6	U488	Mounting Post (2 REQ'D)
7	F1908	Speed Nut #8-32 (8 REQ'D)
8	U429	Hose Clamp (4 REQ'D)
9	U411	Elbow - Vacuum Motor
10	U417	Vacuum Hose - Motor (short)
11	U418	Vacuum Hose - Control Panel (long)
12	731	Lockwasher #10 (4 REQ'D)
13	M7053B	Screw #10-32 x 3/8 (4 REQ'D)
14	60	Nut #10-32 (4 REQ'D)
15	U1383	Filler Tube Support Bracket
16	H1233	Foam Generator Mount Bracket (Included w/Code No. 1)



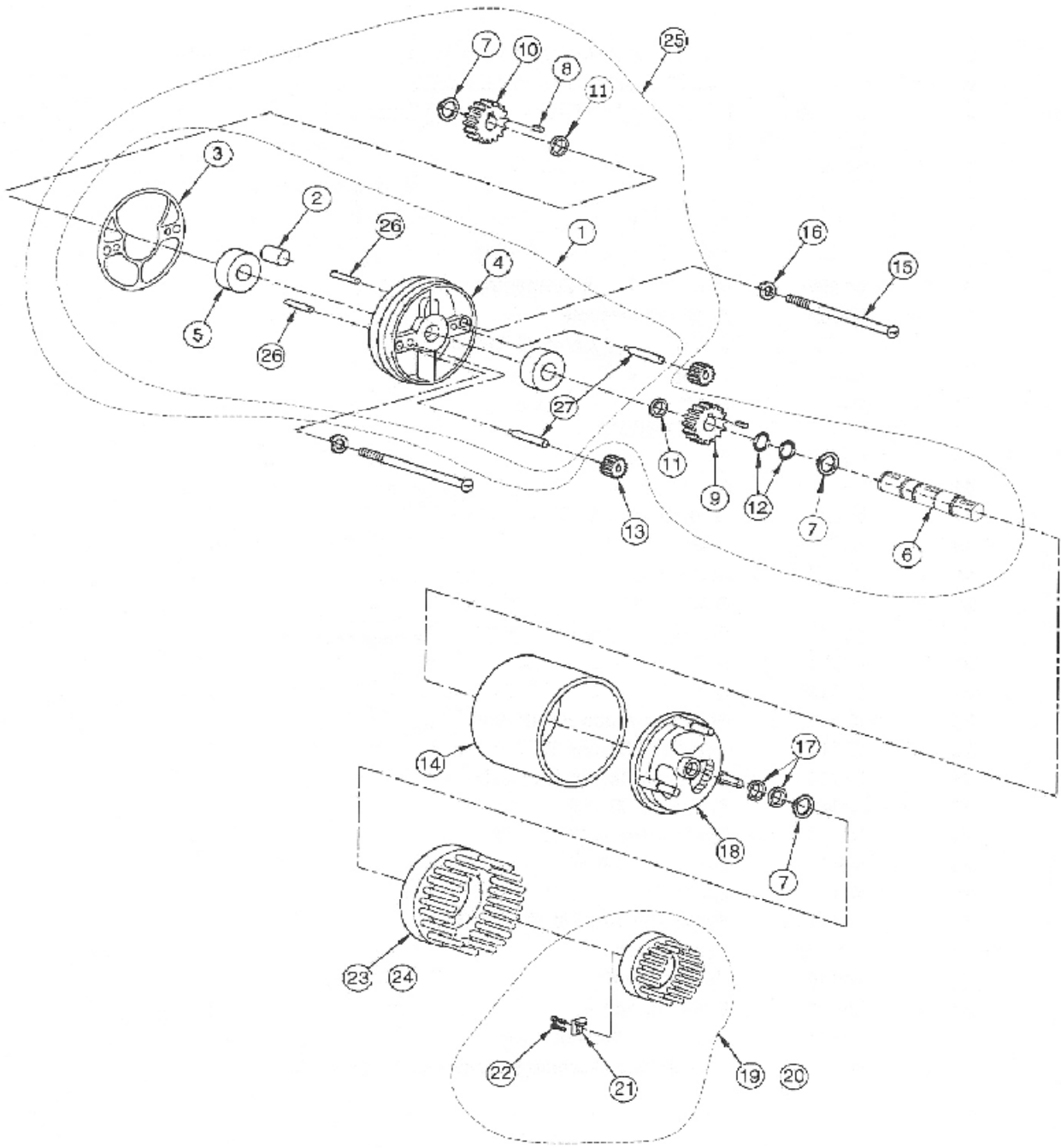
CODE NO.	PART NO.	DESCRIPTION
1	U1189	Vacuum Motor Assembly (110v)
	U1191	Vacuum Motor Assembly (220v)
2	U1198	Heat Shield
3	X422	Nut - #10-24 (3 REQ'D)
4	U1135	Fan Housing Hold Down - (110v) (3 REQ'D)
	U1136	Fan Housing Hold Down - (220v) (3 REQ'D)
5	U1186	Spacer - Vacuum Motor - (110v) (3 REQ'D)
	U1153	Spacer - Vacuum Motor - (220v) (3 REQ'D)
6	U1617	Screw - #10-24 x 2" (3 REQ'D)
7	U1018A	Washer - Flat #10 (3 REQ'D)
8	U1175	Shroud - Vacuum Motor
9	U1152B	Motor Mounting Plate
10	U1088	Hose Clamp (2 REQ'D)
11	U1466	Connector Hose
12	U1838	Hose Assembly - Air Valve to Foam Generator
13	U1359	Hose Clamp (4 REQ'D)
14	U629	Hose - Pressure
15	U611	Hose Clamp (2 REQ'D)
16	U1469	Hose - Foam
17	U1365	Foam Generator Assembly
18	U613	Hose Clamp (2 REQ'D)
19	U1417	Hose - Liquid
20	U1354	Air Valve / Solenoid Assembly
21	U1360	Screw - Air Valve Assembly (2 REQ'D)
22	U1090	Washer - Flat (4 REQ'D)
23	U1356	Air Valve - Top
24	U505A	Retainer - Air Valve
25	U1311	Seal - Air Valve
26	U1086	Stopper - Solenoid
27	U1089	Nut #4-40 (2 REQ'D)
28	U591	Solenoid - Wired
29	U1355	Air Valve - Base
30	U1367	Solenoid Assembly
31	U1401	Spacer - Air Valve
32	F1316	Screen
33	F1355	Retaining Nut
34	U1419	Hose Adapter
35	U1839	Main Body Assembly - Foam Generator



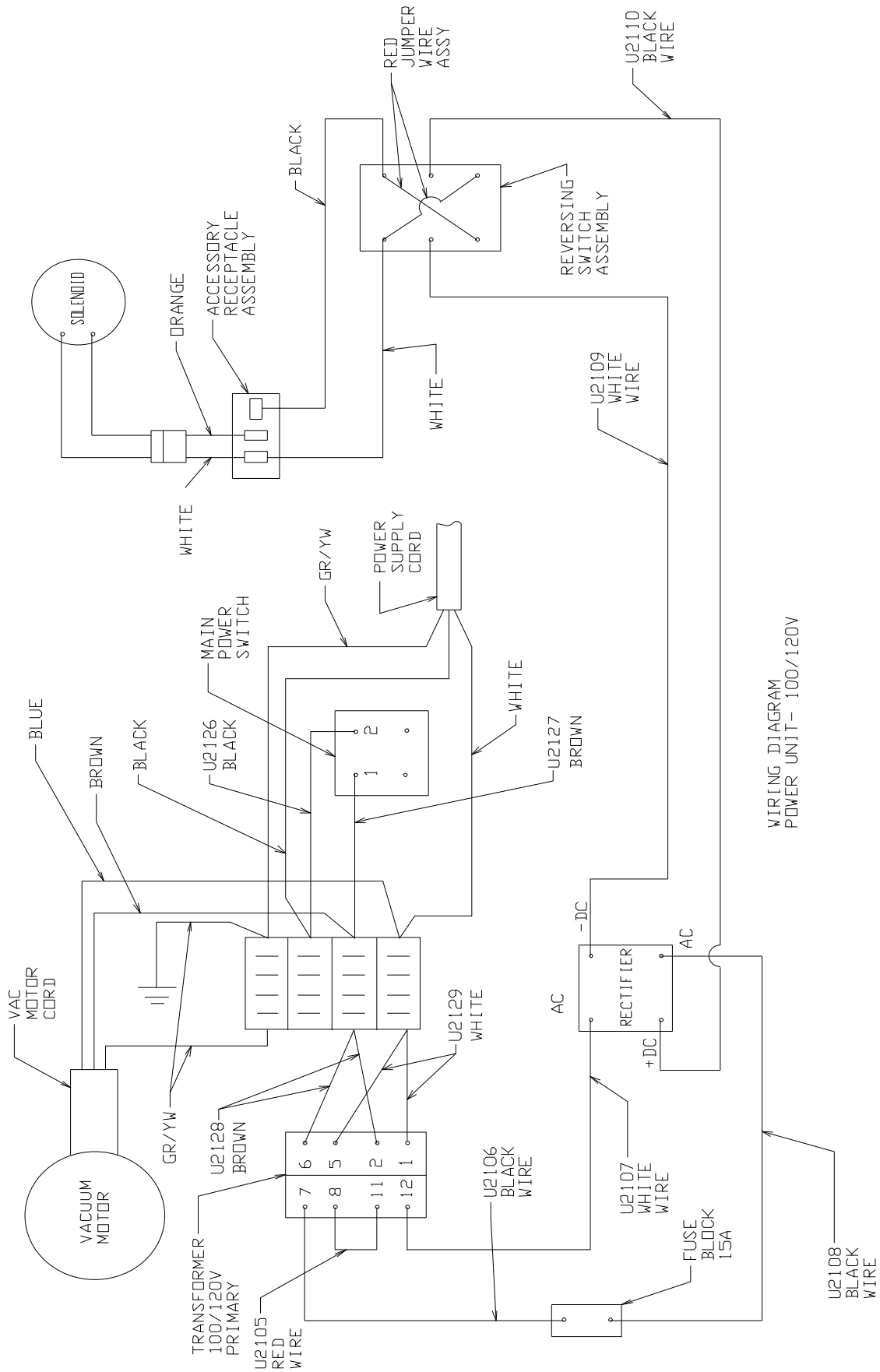
CODE NO.	PART NO.	DESCRIPTION
	U14	Brush Unit - Complete
1	U1561	Motor Housing
2	M9002	Bearing - Armature
3	U1562	Plug - Access
4	U1423	Snap Ring - Armature Shaft (2 REQ'D)
5	X120	O-Ring - Armature Shaft (2 REQ'D)
6	F1519	Screw - #10-24 x 1/4 (2 REQ'D)
7	U1434	Decal - Switch
8	U1497	Cover - Motor Housing
9	U1450A	Armature Assembly (Includes Code No. 4 and 5)
10	234187	Switch
11	U1802	Boot - Switch
	U1832	Wire - White (See Wiring Diagram)
12	U1475A	Field Assembly
13	731	Lockwasher - #10 (2 REQ'D)
14	U1833	Wire - Black (See Wiring Diagram)
15	U1831	Wire - Black (See Wiring Diagram)
16	U1830	Wire - Red (See Wiring Diagram)
17	U1568	Handle Assembly
18	U1563	Casting Assembly - Motor Housing (Includes Code No. 1, 2, 6, 12, and 13)



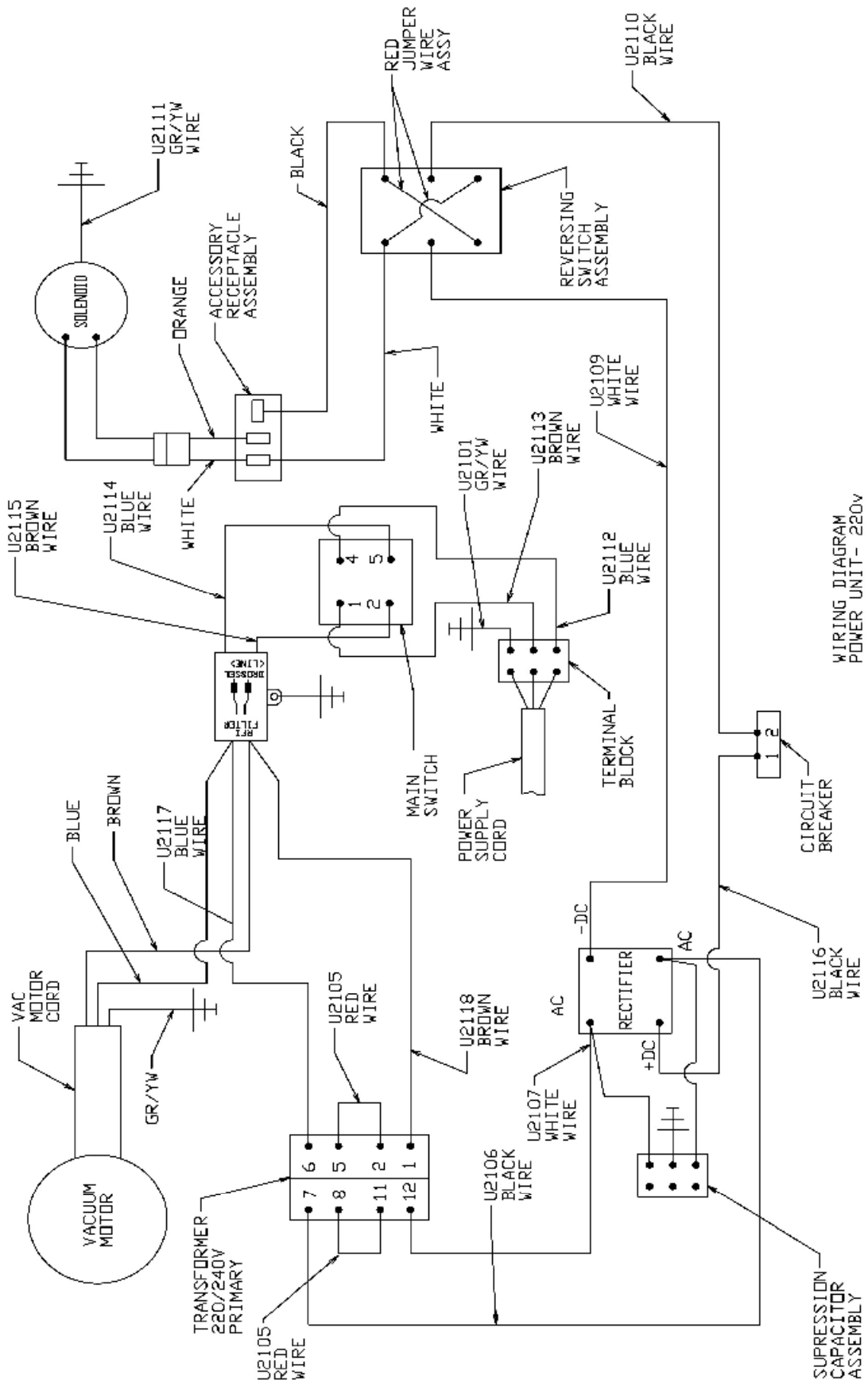
CODE NO.	PART NO.	DESCRIPTION
1	U1352	Two Channel Hose Assembly (Includes Code No. 2-11, 35)
2	U1347	Two Channel Hose Sub-Assembly
3	M11008	Screw - #6-32 x 5/16
4	U1351	Pin
5	X206	Cable Tie (3 REQ'D)
6	U1304	O-Ring (2 REQ'D)
7	U1342	Electrical Plug - Foam Connector
8	U1349	Tube - Foam Connector
9	U1350	Housing - Foam Connector
10	U209A	Plate - Receptacle
11	W393	Screw - #6-32 x 5/16 (2 REQ'D)
12	X120	O-Ring
13	U1565	Shaft
14	M12004	Key (2 REQ'D)
15	U1566	Gear - Large
16	U1567	Gear - Small
17	U1423	Lock Ring (2 REQ'D)
18	U1529	Frame - Brush Unit Assembly (Includes Code No. 19-29)
19	M9002	Bearing - Armature, Lower (2 REQ'D)
20	U1528	Gasket - Motor Housing
21	U1517A	Pin - Alignment 1/16 dia. x 5/16 (3 REQ'D)
22	U1532	Base - Brush Unit Casting
23	U1520B	Connector - Foam Tube
24	U1530	Holder - Carbon Brush (2 REQ'D)
25	U1524	Retainer - Carbon Brush Holder
26	U 1526	Clamp - Retainer (2 REQ'D)
27	U1542	Screw (4 REQ'D)
28	U1550C	Carbon Brush (2 REQ'D)
29	VMI6	Cap - Brush Holder (2 REQ'D)
30	M5005	Lockwasher (2 REQ'D)
31	U1512A	Screw - #8-32 x 7/8 (2 REQ'D)
32	U1509B	Cap - Handle
33	U1540	Cover - Handle
34	U1531	Cover - Motor Base
35	U1344	Spring - 2 Channel Hose
36	U1525B	Cluster Gear Assembly - (Includes Code No. 12-17)



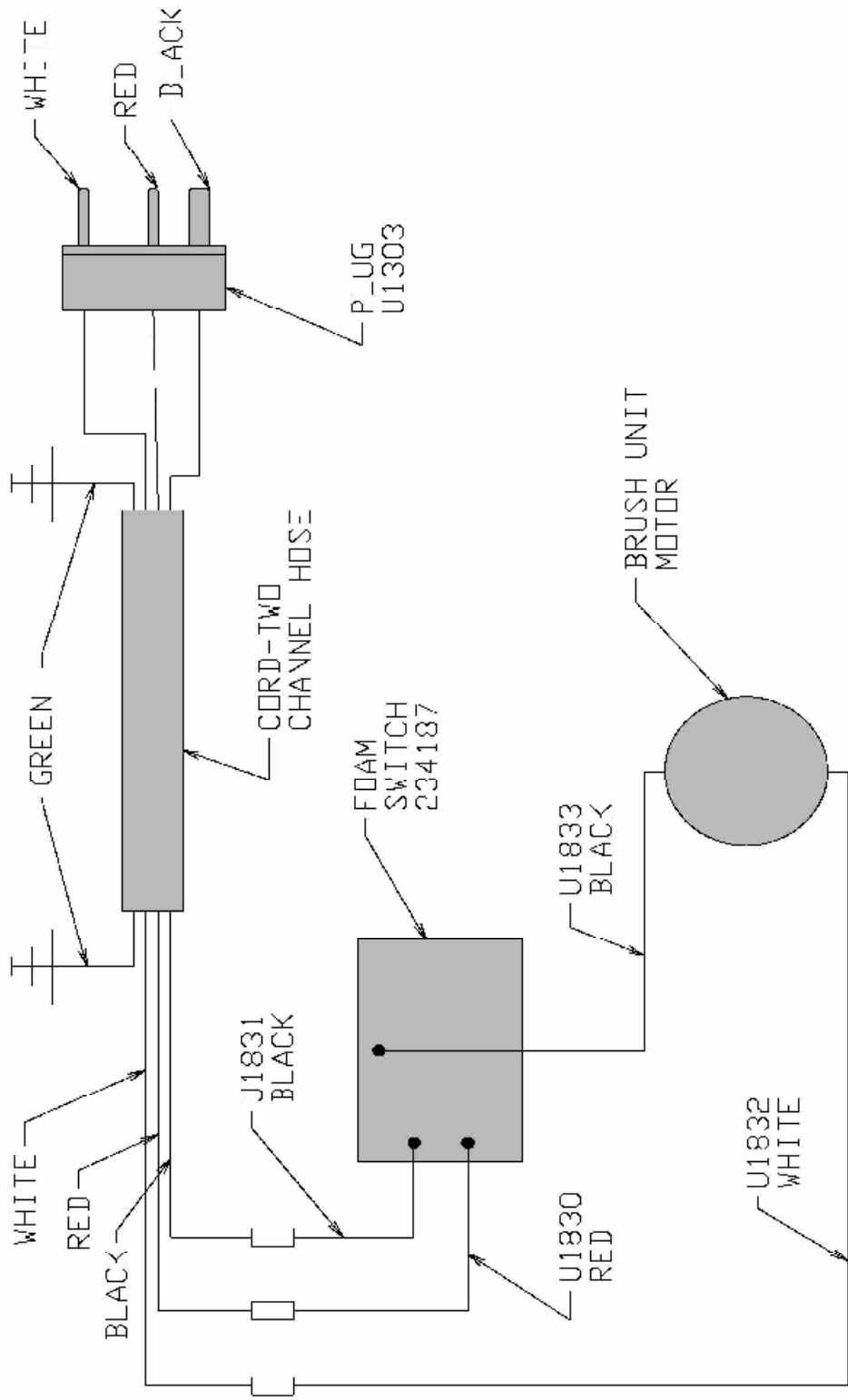
CODE NO.	PART NO.	DESCRIPTION
1	U1675A	Drive Head Casting Assembly (Includes Code No. 2-5, 26 and 27)
2	U1612	Bearing Cluster - Lower
3	U1613	Gasket - Drive Head
4	U1629	Casting - Drive Head
5	U1602A	Bearing - Drive Shaft (2 REQ'D)
6	U1603C	Shaft - Brush Drive
7	U1604A	Snap Ring - 1/2 dia. External (3 REQ'D)
8	U1605A	Key - #403 Woodruff (2 REQ'D)
9	U1606A	Gear - Drive Shaft, Outside
10	U1607A	Gear - Drive Shaft, Inside
11	U1610	Ring Spacer - Drive Shaft (2 REQ'D)
12	F1324	O-Ring - Drive Shaft (2 REQ'D)
13	U1609A	Gear - Idler (2 REQ'D)
14	U1614C	Shroud - Foam
15	U1617	Screw - #10-24 x 2 (2 REQ'D)
16	D277	Lockwasher - #10 (2 REQ'D)
17	U1709	Shield (Stainless Steel) (As Req'd)
18	U1725A	Ring Gear Assembly
19	U1750A	Small Brush - Regular White Bristles (Includes Code No. 21 and 22)
20	U1780A	Small Brush - Stiff Black Bristles (Includes Code No. 21 and 22)
21	U1707	Clip - Small Brush
22	U1708	Screw - #6 x 3/8 (2 REQ'D)
23	U1775B	Large Brush - Regular White Bristles
24	U1785B	Large Brush - Stiff Black Bristles
25	U1625	Drive Head Assembly (Includes Code No. 1, 6-12)
26	U1517A	Dowel Pin - 1/16 Dia. x 5/16 (2 REQ'D)
27	U1628	Pin - Idler (2 REQ'D)



WIRING DIAGRAM
POWER UNIT- 100/120V



WIRING DIAGRAM
POWER UNIT - 220v



WIRING DIAGRAM
BRUSH UNIT

ARIDEX[®]

The Dry
Upholstery Cleaning System

Racine Industries, Inc.
1405 Sixteenth Street
Racine, WI 53403

☎ (262) 637-4491
☎ (800) 558-9439
FAX (262) 637-0558
www.hostdry.com